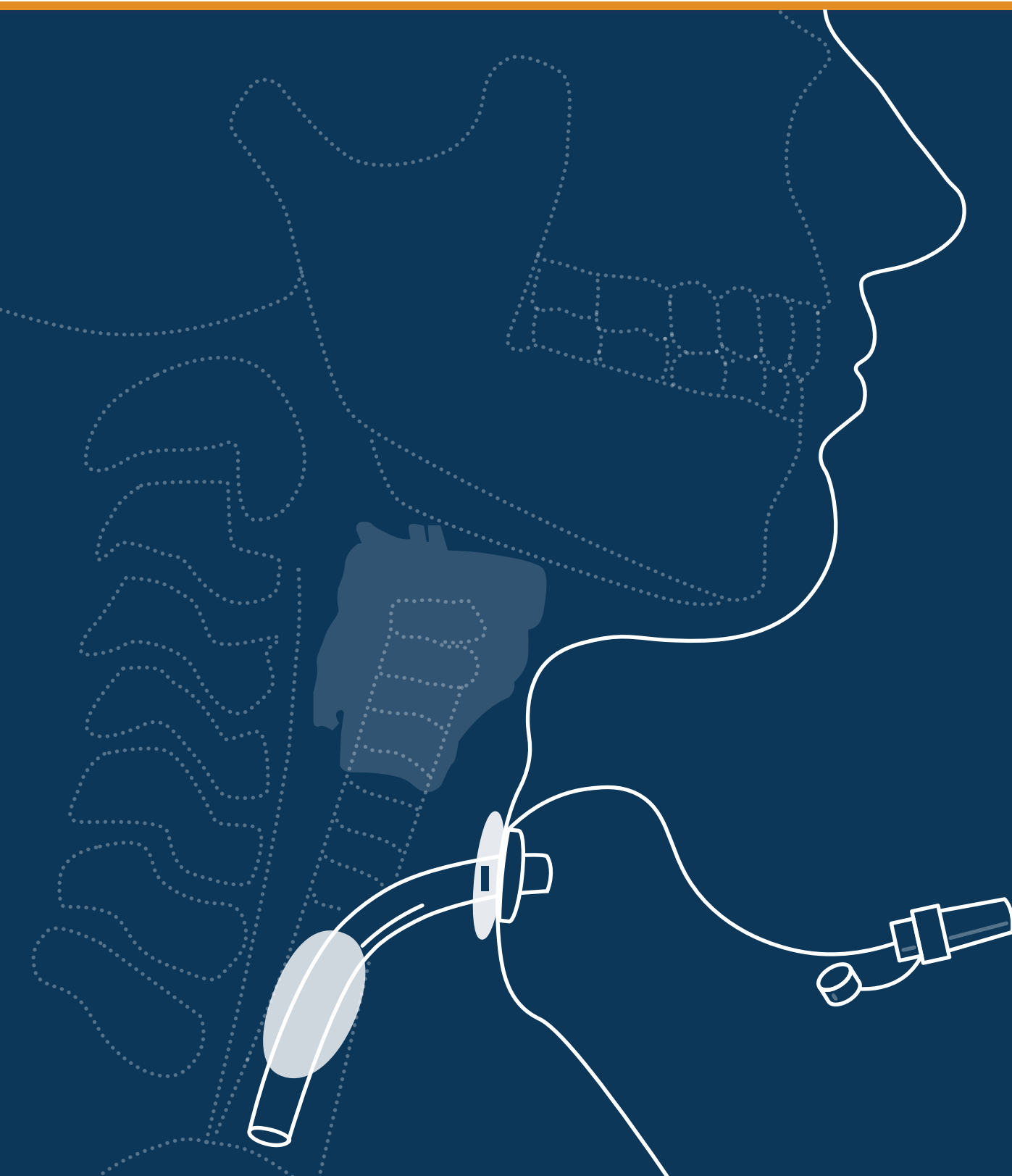




Innovative automated subglottic suction system

# Accessories catalogue

## simex *cuff M* & *cuff S*



# philosophy & history

## 1994

### Company Philosophy

simex Medizintechnik GmbH, a family owned company, was founded in 1994 and developed since to a knowledgeable and reliable partner for the medical professionals and distributors worldwide. Highest quality standards and excellent customer service has earned us recognition in the International Market. To maintain our quality standards we introduced our Quality Management System according to DIN EN ISO 13485 successfully in 1997.

At simex we are committed to develop, manufacture and supply innovative products of highest quality standards and focus on patient and customer satisfaction.

Our experienced team strives constantly to improve the internal processes and offer service to ensure that quality and safe products reach to patients and medical professionals.

We work closely with our qualified and experienced distribution partners to ensure consistent quality products and services.

## 10.000+

### Products

With a range of over 10.000 quality surgical products simex is able to provide full support in procurement tenders and Turn-Key projects.

The product portfolio comprised of:

- Negative Pressure Wound Therapy System
- Automated subglottic aspiration System
- Portable suction devices
- General Surgical Instruments
- Micro- and Neuro Surgical Instruments
- Endoscopy Instruments



## location

Our company is located since more than 25 years in Deißlingen, at the origin of the river Neckar between the towns of Villingen-Schwenningen and Rottweil.



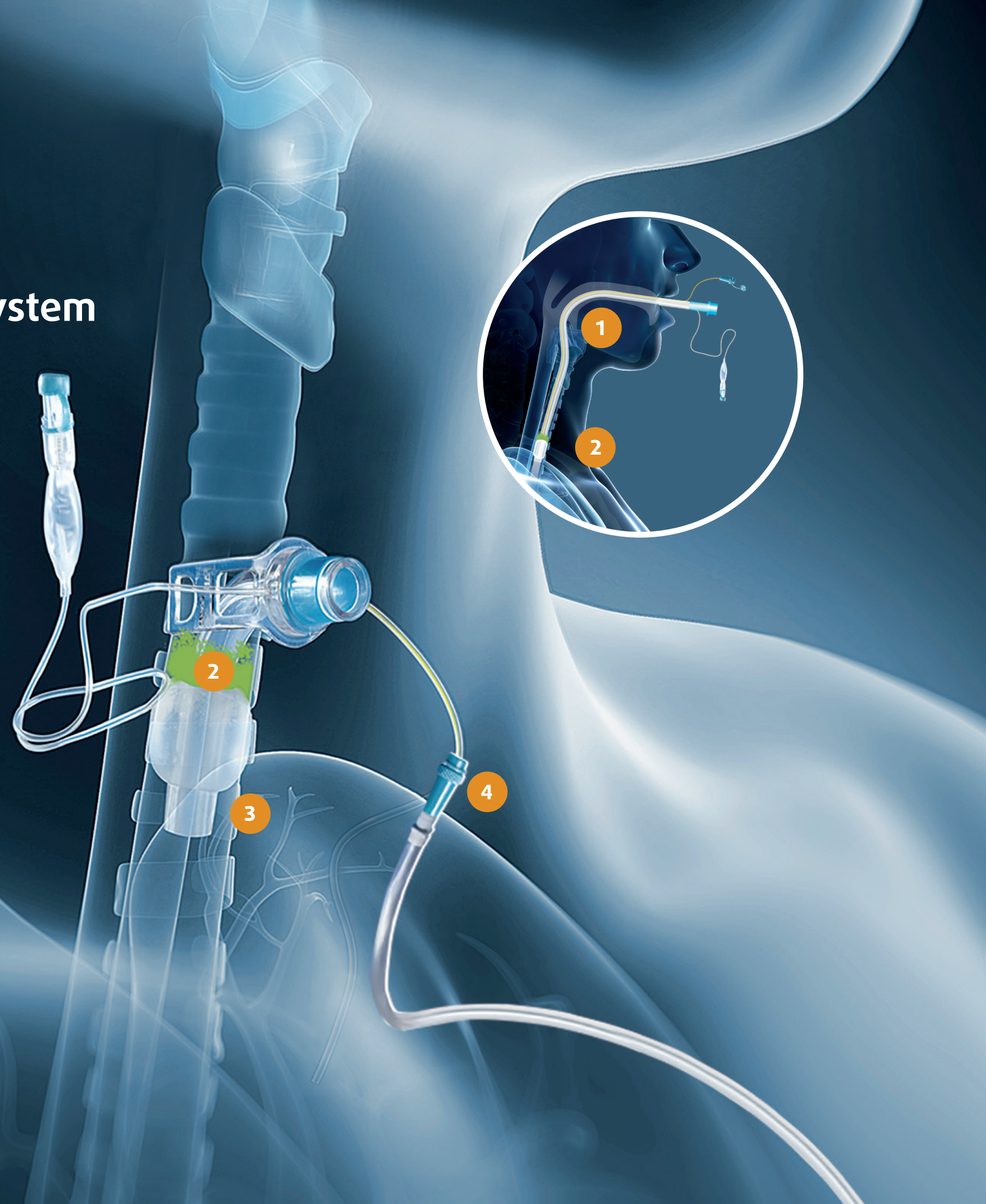


# simex automated subglottic aspiration system innovation

## Description

The simex Subglottic Aspiration System, *cuff S* and *cuff M* are the most advanced solution for the aspiration of subglottic secretion, featuring all new state-of-the-art "Intermittent" mode of therapy

- 1 Endotracheal tube with special suction lumen
- 2 Subglottic secretion
- 3 Tracheal tube with special suction lumen
- 4 Subglottic secretion is removed via the simex *cuff S* or *cuff M* pump with the convenience of highly customized intermittent settings





**simex *cuff M***  
mobility miracle





Description

The disposable secretion canister system consists of a canister with a permanently attached suction tube. A bacterial filter, a carbon filter and a solidifier are also integrated in the system. The integrated hydrophobic bacterial filter works effectively against bacteria and viruses. In the event of an user error, this integrated filter prevents oversuction and contamination of the *cuff M*. If liquid reaches this filter, the suction process is interrupted and an error message appears on the display.

The treatment can be continued after changing the disposable secretion canister. Furthermore, the built-in carbon filter prevents odor.

The integrated solidifier enables a leak-proof transport and a safe disposable of the canister system. After a short period of time, the liquid has thickened firmly.

Benefits

- Easy handling and quick exchange
- Can be operated standing and lying on the side
- Overflow protection and odor minimization

Features

- Disposable secretion canister with integrated solidifier
- Available in different sizes
- Luer connector

| Item number | Description  | Packaging unit |
|-------------|--|----------------|
| 1 100488    | <i>cuff M</i> disposable secretion canister system, 750 ml | 13             |
| 2 100489    | <i>cuff M</i> disposable secretion canister system, 250 ml | 35             |





Description

The simex device holders have a long service life. They enable the individual assembly of the suction device *cuff* M. Due to the high quality of the used materials, the holder can be easily cleaned by wiping with disinfectant without putting any strain on the material. The holders are therefore ideally suited for use in sensitive areas such as intensive care units, care facilities, etc.

The holders are available in two different sizes. This means that the device can be securely attached, regardless of the selected canister size.

| Item number | Description                                   | Packaging unit |
|-------------|---|----------------|
| 1 100348    | <i>cuff</i> M IV-pole holder, 250 ml          | 1              |
| 2 100776    | <i>cuff</i> M IV-pole holder, 250 ml & 750 ml | 1              |

Description

The transport case can be used for storage and transport. The device and the accessories can be stored there in a shock- and splash-proof manner.

The single-use carrying bag can be used for mobile transport on the patient. When changing patients, the bag can simply disposed. This cost-effective solution prevents cross-contamination.

| Item number | Description                  | Packaging unit |
|-------------|------------------------------|----------------|
| 3 100500    | <i>cuff</i> M carrying bag   | 1              |
| 4 100498    | <i>cuff</i> M transport case | 1              |

**simex *cuff S***  
large volume





Description

The simex disposable secretion canister system was specially developed for use in the inpatient area. The system consists an outer canister, the holder for the outer canister, the suction bag and a connecting hose.

The outer canister and its holder, as well as the connecting hose, can be easily cleaned / disinfected. simex Medizintechnik GmbH recommends replacing the parts at least every 4 weeks. Please always observe the applicable hygiene regulations.

The secretion is absorbed via the suction bag with a capacity of 1,000 ml. A solidifier has been integrated for safe disposal, which prevents leakage and contact with possibly contaminated suction material. Further highlights of the canister system are the hydrophobic filter, which serves as an overflow protection as well as the carbon filter to minimize odors. Together with the internal built-in hydrophilic filter, the inside of the device is effectively protected against oversuction and contamination.

Benefits

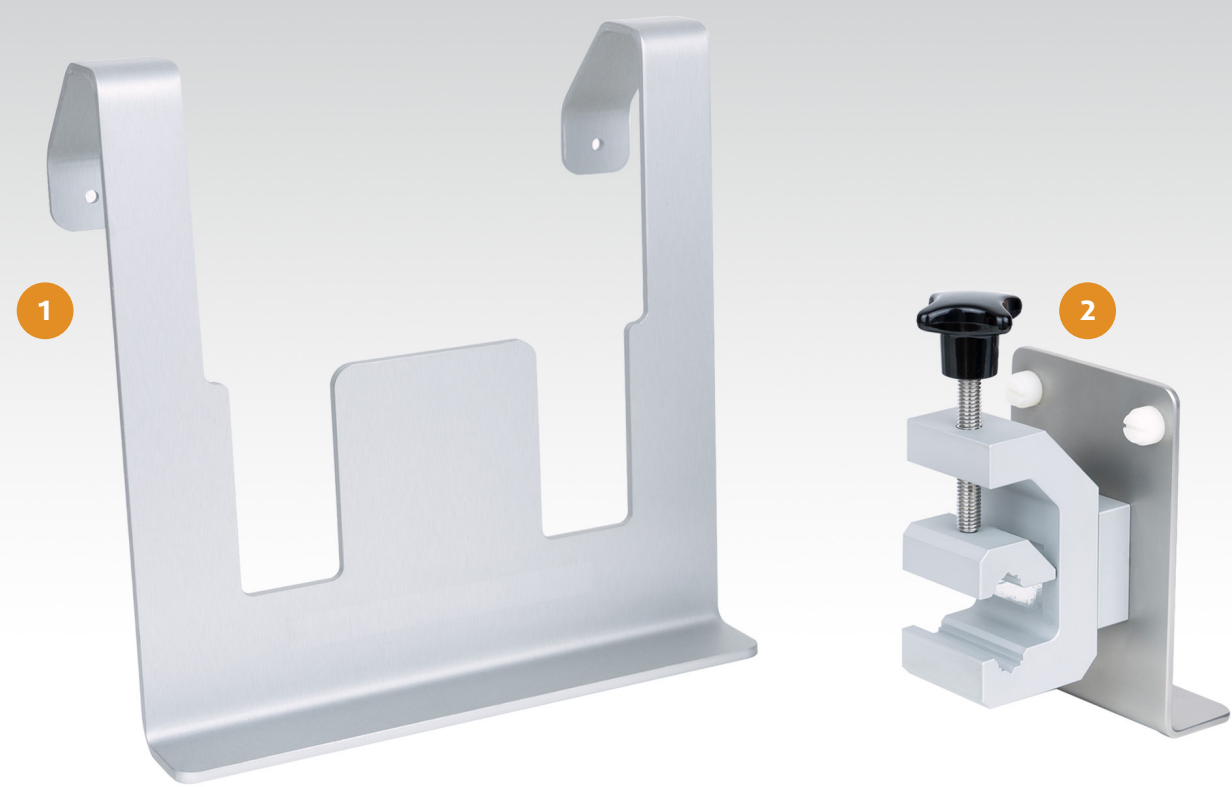
- Cost effective canister system
- Safe and quick disposal

Features

- Multi-part canister system
- Overflow protection and odor minimization

| Item number | Description                        | Packaging unit |
|-------------|------------------------------------|----------------|
| 1 20103     | cuff S connecting tube             | 1              |
| 2 100509    | cuff S disposable suction bag, 1 L | 60             |
| 3 100414    | cuff S outer canister, 1 L         | 1              |
| 4 100416    | cuff S canister holder             | 1              |





Description

The product group of simex device holders is characterized by their high durability and the various mounting positions. Due to the high quality of the used materials, the brackets can easily be cleaned by wiping with disinfectant without putting any strain on the material. The holders are therefore ideally suited for use in sensitive areas such as intensive care units, care facilities, etc.

We recommend the universal holder for attachment to patient beds. The device simply slides into the holder from above. The IV pole / rail holder is ideally suited for further fastening options. The device also slides into the holder from above. The screw clamp at the rear end can be turned at intervals of 45 °.

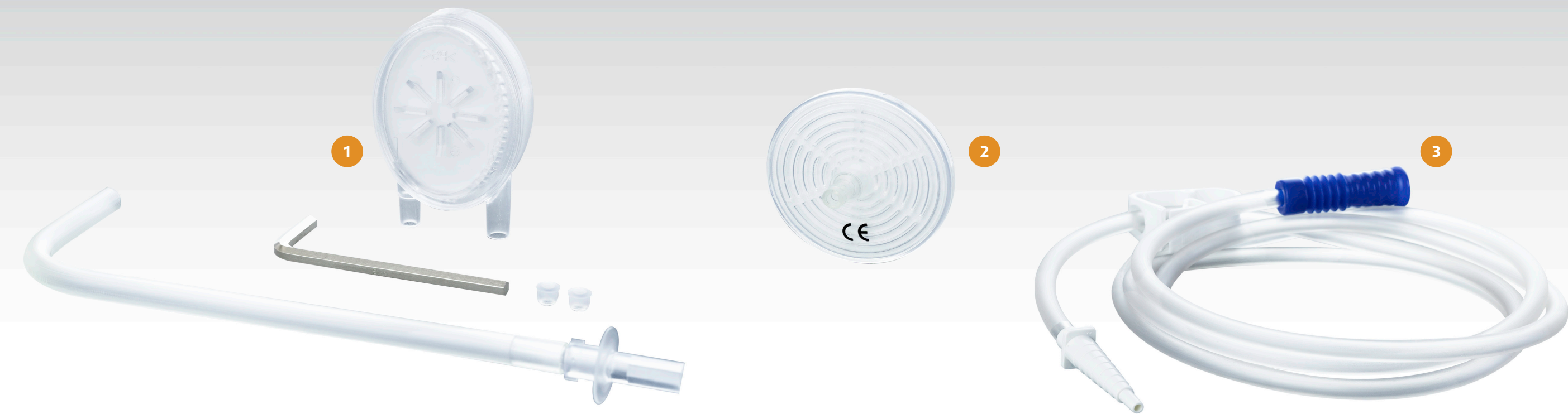
|   | Item number | Description             | Packaging unit |
|---|-------------|-------------------------|----------------|
| 1 | 100484      | cuff S universal holder | 1              |
| 2 | 100346      | cuff S IV-pole holder   | 1              |



Description

The transport case can be used for storage and transport. The device and the accessories can be stored there in a shock-proof and splash-proof manner. The single-use carrying bag can be used for mobile transport on the patient.

|   | Item number | Description           | Packaging unit |
|---|-------------|-----------------------|----------------|
| 3 | 100501      | cuff S carrying bag   | 1              |
| 4 | 100499      | cuff S transport case | 1              |



Description

The simex *cuff S* system has an internal bacteria filter. It protects the inside of the device effectively from contamination and oversuction. The filter system ensures a safe reprocessing and a quick re-use of the product.

The round bacterial filter can be used as additional protection against contamination and oversuction, placed between the suction bag and the device.

The 180 cm long suction tube with a CH 21 diameter is equipped with a clamp, as well as a funnel and step connector. This suction tube fits all commercially available tracheostomy tubes.

Benefits

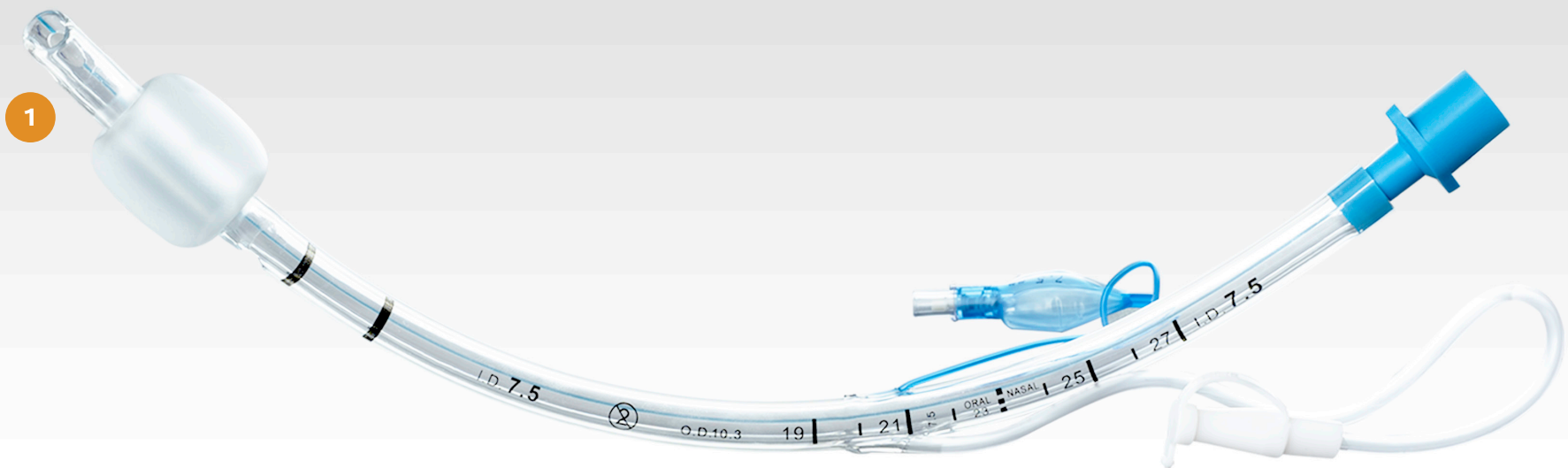
- Easy filter change
- Protection against contamination
- Protection against oversuction

Features

- Replacement set
- Hydrophobic bacterial filter
- Step and funnel connector

|   | Item number | Description                              | Packaging unit |
|---|-------------|--|----------------|
| 1 | 100012      | Replacement set double filter system DFS | 1              |
| 2 | 100196      | Bacterial filter                         | 1              |
| 3 | 112203      | Sterile suction tube with clamp, 180 cm  | 1              |





Description

On request, we are happy to offer special sterile endotracheal and tracheostomy tubes for subglottic aspiration with inner diameters of 5.0 mm to 10.0 mm.

These cannulas support the automatic suctioning of secretions, which accumulate over the cuff (balloon) and increase therefore the prevention of VAP.

Benefits

- Developed for long-term ventilation
- Minimizing the risk of infection
- Suction lumen for automatic aspiration

Features

- Latex free
- Sterile
- Subglottic suction tube

| Item number | Description | Packaging unit                          |
|-------------|-------------|---|
| 1           | On request  | Endotracheal cannula with suction lumen |
| 2           | On request  | Tracheostomy cannula with suction lumen |



Description

The simex cuff M and simex cuff S devices are operated via the internal battery or the supplied power supply unit, which also enables the battery to be charged. An overtemperature protection also prevents the battery from overheating by interrupting the charging process if the battery temperature is too high (e.g. due to unfavorable ambient conditions).

Check the power supply unit and the power cord for possible damage and replace it immediately if it is damaged.

| Item number | Description                                      | Packaging unit |
|-------------|--|----------------|
| 1 100442    | Power supply unit incl. adapter (EN, US, UK, AU) | 1              |



Description

Car charger with adapter plug for cigarette lighter to charge the devices on the go.

| Item number | Description        | Packaging unit |
|-------------|--------------------|----------------|
| 2 400127    | Car charging cable | 1              |



All rights reserved. Reprinting, even excerpt-wise, is forbidden.  
No part of the catalogue may be reproduced in any form  
(photocopy, microfilm or other process) or processed, duplicated  
or distributed using electronic systems without the written  
permission from simex Medizintechnik GmbH.  
The pictures of the goods can appear different from the  
delivered goods.  
Products are not available in all countries!  
This brochure is for distribution outside the USA only!

SX4002-EN  
BR\_cuffM-S\_Zubehoer\_EN\_2021-03-25\_Rev.00

**simex Medizintechnik GmbH**  
Brückstraße 30/1  
D-78652 Deißlingen, Deutschland  
–  
**phone** +49 (0) 7420 9204-0  
**fax** +49 (0) 7420 9204-17  
**e-mail** [info@simexmed.de](mailto:info@simexmed.de)  
**internet** [www.simexmed.de](http://www.simexmed.de)

---