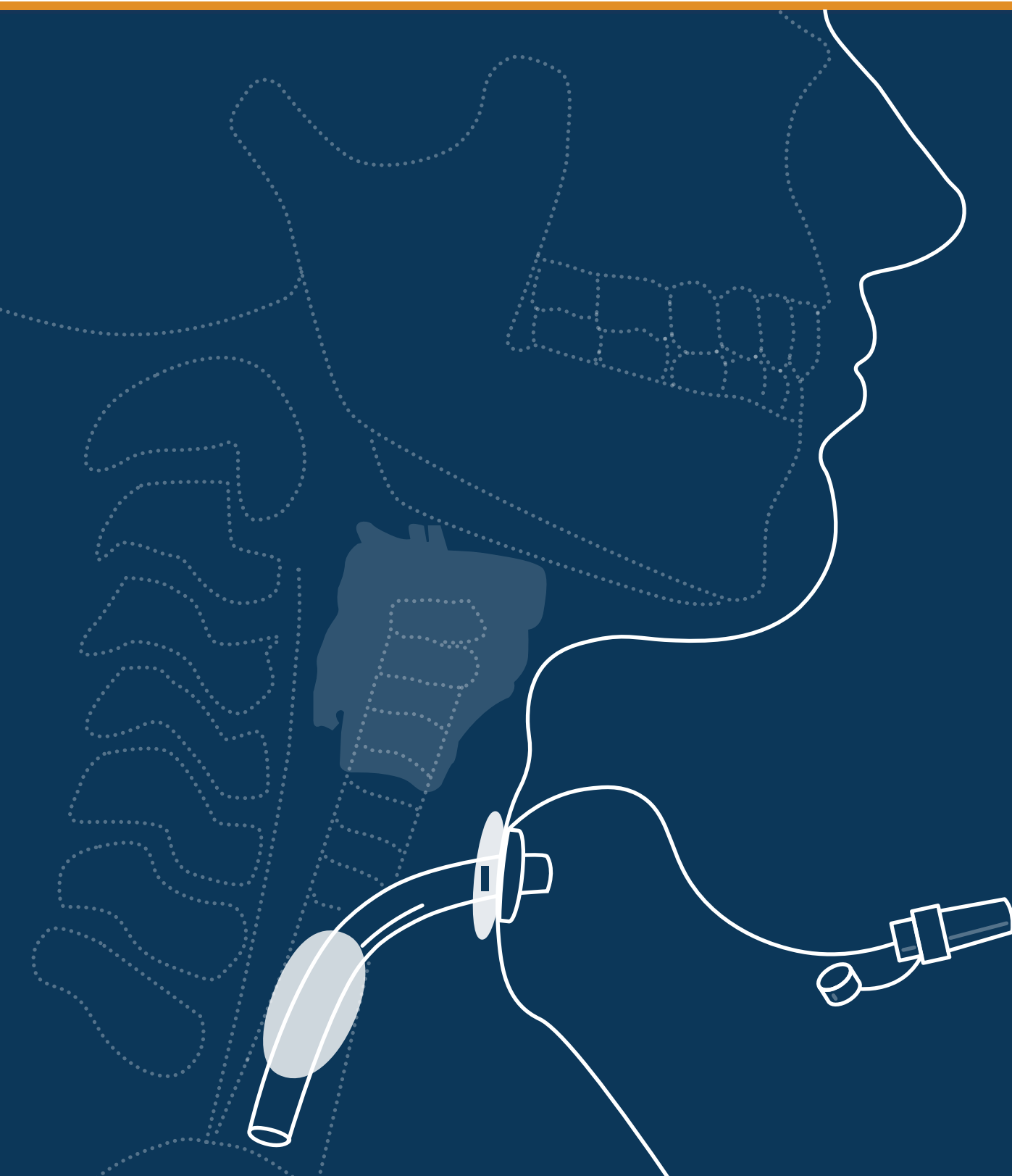




Innovative automated subglottic suction system

Accessories catalogue

simex *cuff M* & *cuff S*



philosophy & history

1994 Year of establishment

Since simex Medizintechnik GmbH was founded, the family-owned company has developed into a competent and reliable partner for medical professionals and distributors worldwide. High quality standards and excellent customer service have led to an outstanding recognition on the international markets. In order to ensure these requirements, a quality management system was successfully implemented according to DIN EN ISO 13485 since 1997.

simex is characterized by remarkable performance in the areas of design and development, manufacturing and sale of products in the field of negative pressure therapy and the treatment of intensive care patients. Together with our competent external partners, we're able to form synergies for developing new solutions in the field of healthcare. Our vision is to continuously improve the established treatment methods through development of new, innovative and efficient product systems in order to sustainably increase health and patient comfort.

We can offer an individually adapted service for the different customer needs, due to the high flexibility and commitment of our employees. Our aim is to create an additional advantage for the customer and to exceed their expectations.

10.000+ Products

simex Medizintechnik GmbH offers a comprehensive product range.

The product portfolio consists of:

- Negative Pressure Wound Therapy System (NPWT)
- Automated Subglottic Aspiration System
- Portable Suction System
- General Surgical Instruments
- Micro- and Neuro Surgical Instruments
- Endoscopy Instruments



location

Our company is located near the origin of the river Neckar between the towns of Villingen-Schwenningen and Rottweil since more than 25 years.

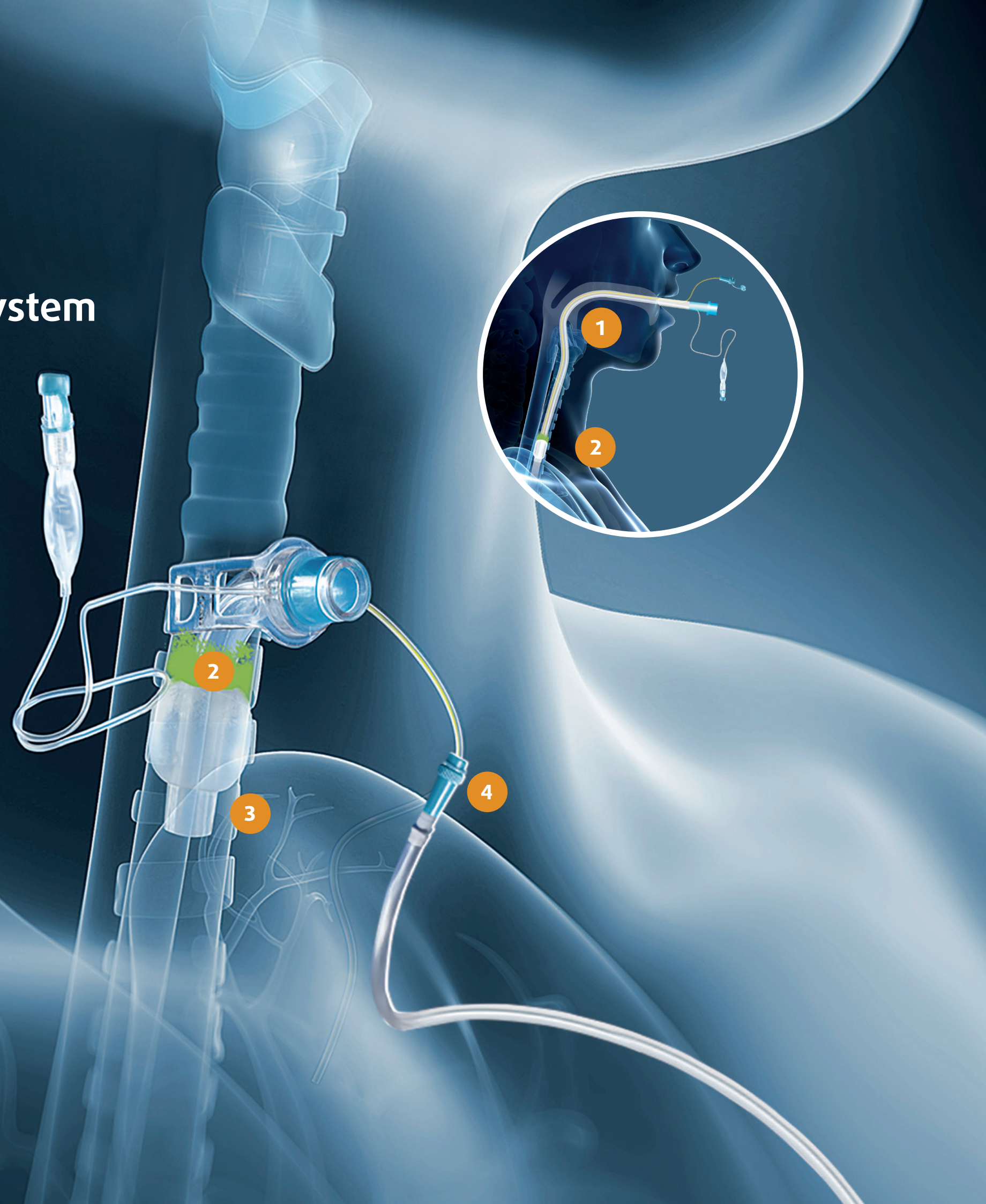


simex automated subglottic aspiration system innovation

Description

The simex Subglottic Aspiration System, *cuff S* and *cuff M* are the most advanced solution for the aspiration of subglottic secretion, featuring all new state-of-the-art "Intermittent" mode of therapy.

- 1 Endotracheal tube with special suction lumen
- 2 Subglottic secretion
- 3 Tracheal tube with special suction lumen
- 4 Subglottic secretion is removed via the simex *cuff S* or *cuff M* pump with the convenience of highly customized intermittent settings



simex *cuff M*
mobility miracle





Description

The disposable secretion canister system consists of a canister with a permanently attached suction tube. A bacterial filter, a carbon filter and a solidifier are also integrated in the system. The integrated hydrophobic bacterial filter works effectively against bacteria and viruses. In the event of an user error, this integrated filter prevents oversuction and contamination of the *cuff M*. If liquid reaches this filter, the suction process is interrupted and an error message appears on the display.

The treatment can be continued after changing the disposable secretion canister. Furthermore, the built-in carbon filter prevents odor.

The integrated solidifier enables a leak-proof transport and a safe disposal of the canister system. After a short period of time, the liquid has thickened firmly.

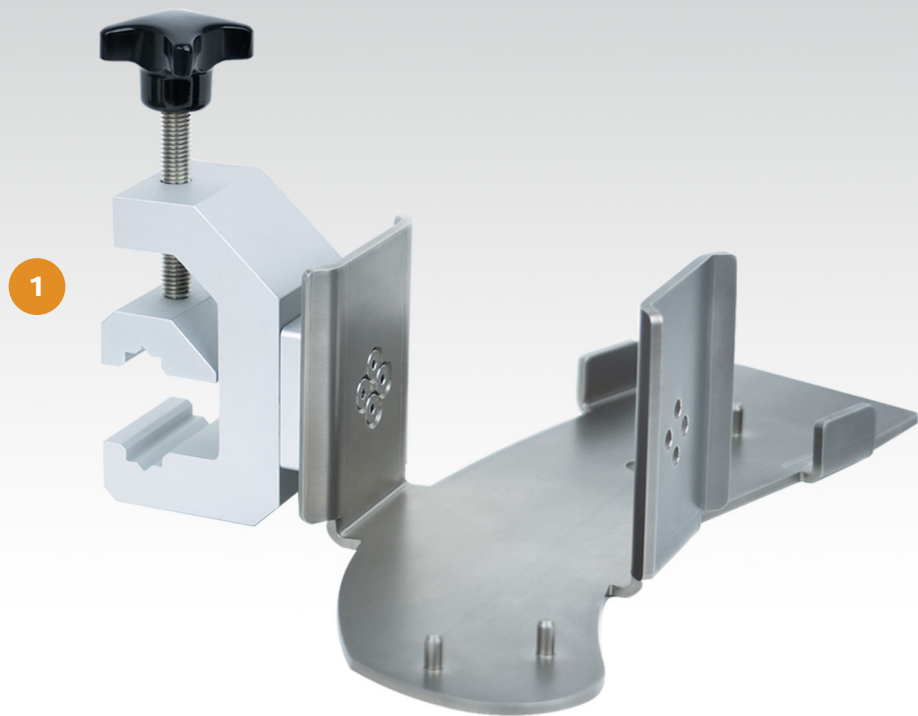
Benefits

- Easy handling and quick exchange
- Can be operated upright and horizontally
- Overflow protection and odor minimization

Features

- Disposable secretion canister with integrated solidifier
- Available in different sizes
- Luer connector

Item number	Description	Packaging unit
1 100488	<i>cuff M</i> Disposable secretion canister system, 750 ml	13
2 100489	<i>cuff M</i> Disposable secretion canister system, 250 ml	35



Description

The simex device holder has a long service life. It enables an individual assembly of the suction device *cuff M* on IV-pole holder and rail systems. Due to the high quality of the used materials, the holder can easily be cleaned and disinfected. The holder is therefore ideally suited for use in sensitive areas such as intensive care units, care facilities, etc.

The holder is compatible with the *cuff M* disposable canister system (250 ml / 750 ml).

Item number	Description	Packaging unit
1 100776	<i>cuff M</i> Holder for IV-pole/rail systems	1



Description

The transport case can be used for storage and transport. The device and the accessories can be stored in a shock-proof and splash-proof manner.

The single-use carrying bag is designed for mobile patients. When changing patients, the bag can be easily disposed. This cost-effective solution prevents cross-contamination.

Item number	Description	Packaging unit
2 100500	<i>cuff M</i> Carrying bag	1
3 100498	<i>cuff M</i> Transport case	1

simex *cuff S*
large volume





Description

The simex disposable secretion canister system was specially developed for use in the inpatient area. The system consists of an outer canister, the holder for the outer canister, the suction bag and a connecting hose.

The outer canister and its holder, as well as the connecting hose, can be easily cleaned/disinfected. simex Medizintechnik GmbH recommends replacing the parts between patients or at least every 4 weeks. Please always observe the applicable hygiene regulations.

The secretion is absorbed in the suction bag with a capacity of 1 L. A solidifier has been integrated for safe disposal, which prevents leakage and contact with possibly contaminated suction material. Further highlights of the canister system are the hydrophobic filter, which serves as an overflow protection as well as the carbon filter to minimize odors. Together with the internal built-in hydrophilic filter, the inside of the device is effectively protected against oversuction and contamination.

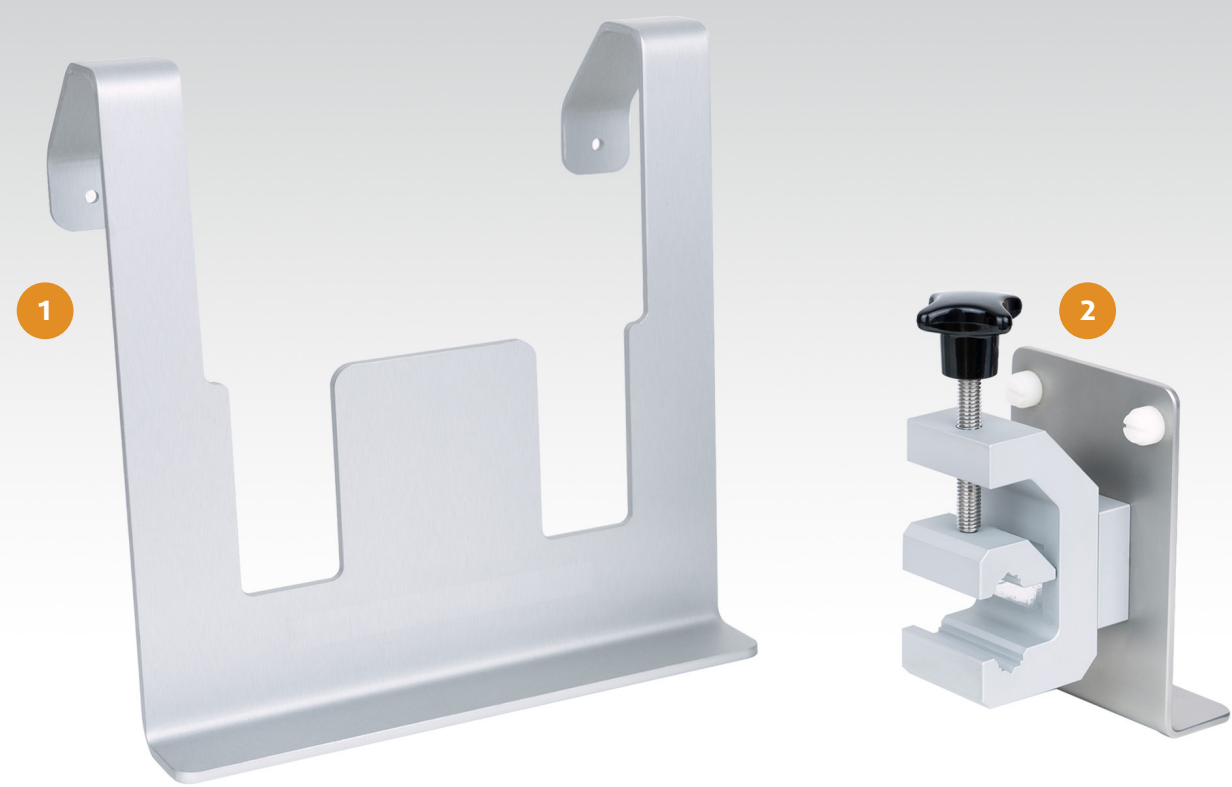
Benefits

- Cost effective canister system
- Safe and quick disposal

Features

- Multi-part canister system
- Overflow protection and odor minimization

	Item number	Description	Packaging unit
1	20103	cuff S Connecting tube	1
2	100509	cuff S Disposable suction bag, 1 L	60
3	100414	cuff S Outer canister, 1 L	1
4	100416	cuff S Canister holder	1



Description

The product group of simex device holders is characterized by their high durability and the various mounting positions. Due to the high quality of the used materials, the holders can easily be cleaned and disinfected. The holders are therefore ideally suited for use in sensitive areas such as intensive care units, care facilities, etc.

We recommend the universal holder for mounting to patient beds. The device simply slides into the holder from above. The IV-pole/rail holder is ideally suited for further fastening options. The device also slides into the holder from above and is secured by two screws. The clamp can be turned at intervals of 45 °.

Item number	Description	Packaging unit
1 100484	cuff S Universal holder	1
2 100346	cuff S Holder for IV-pole/rail systems	1

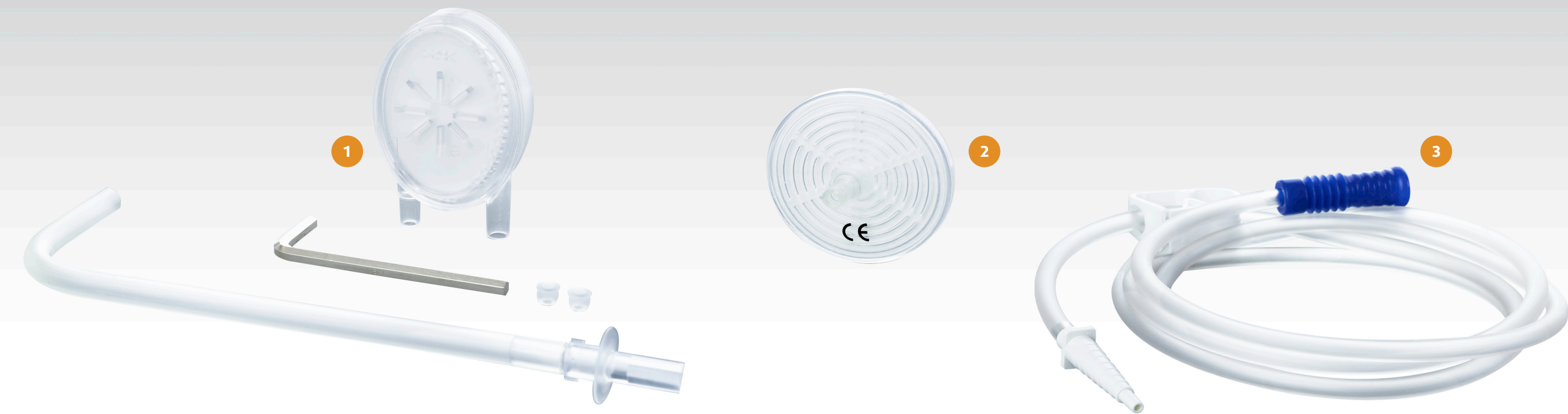


Description

The transport case can be used for storage and transport. The device and the accessories can be stored in a shock-proof and splash-proof manner.

The single-use carrying bag is designed for mobile patients. When changing patients, the bag can be easily disposed. This cost-effective solution prevents cross-contamination.

Item number	Description	Packaging unit
3 100501	cuff S Carrying bag	1
4 100499	cuff S Transport case	1



Description

The simex *cuff S* system has an internal bacteria filter. It protects the inside of the device effectively from contamination and oversuction. The replacement set for the double filter system ensures a safe reprocessing and a quick re-use of the product.

The round bacterial filter can be used as additional protection against contamination and oversuction, placed between the suction bag and the device.

The 180 cm long suction tube with an outer diameter of CH 21 (7 mm) is equipped with a clamp, as well as a funnel and step connector. This suction tube fits all commercially available tracheostomy tubes.

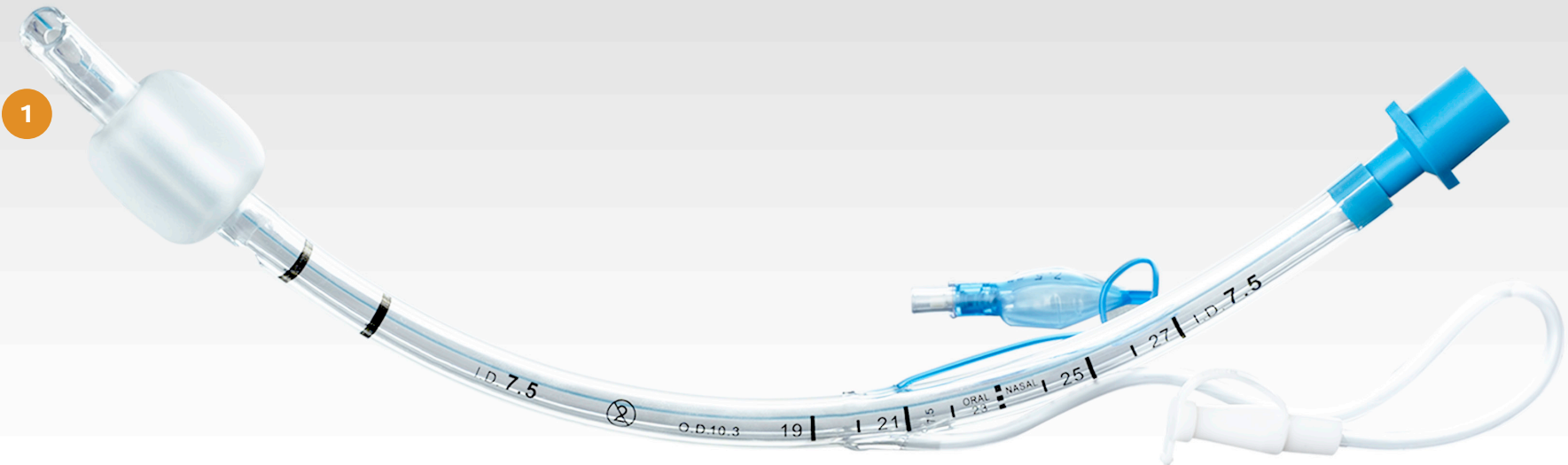
Benefits

- Easy filter change
- Protection against contamination
- Protection against oversuction

Features

- Replacement set
- Hydrophobic bacterial filter
- Step and funnel connector

	Item number	Description	Packaging unit
1	100012	Replacement set double filter system DFS	1
2	100196	Bacterial filter	1
3	112203	Sterile suction tube, step connector, 180 cm	1



Description

On request, we are happy to offer special sterile endotracheal and tracheostomy tubes for subglottic aspiration with inner diameters of 5.0 mm to 10.0 mm.

These cannulas support the automatic suctioning of secretions, which accumulate over the cuff (balloon) and increase therefore the prevention of VAP.

Benefits

- Developed for long-term ventilation
- Minimizing the risk of infection
- Suction lumen for automatic aspiration

Features

- Latex free
- Sterile
- Subglottic suction tube

Item number	Description	Packaging unit
1	On request	Endotracheal cannula with suction lumen
2	On request	Tracheostomy cannula with suction lumen



Description

The simex *cuff* M and simex *cuff* S devices are operated via the internal battery or the supplied power supply unit, which also enables the battery to be charged. In addition, an overtemperature protection prevents the battery from overheating by interrupting the charging process if the battery temperature is too high (e. g. due to unfavorable ambient conditions).

Check the power supply unit and the power cord before use for possible damage and replace it immediately if it is damaged.

Item number	Description	Packaging unit
1 100442	Power supply unit incl. adapter (EU, US, UK, AU)	1



Description

Car charger with adapter plug for cigarette lighter to charge the devices on the go.

Item number	Description	Packaging unit
2 400127	Car charging cable	1

All rights reserved. Reprinting, even excerpt-wise, is forbidden.
No part of the catalogue may be reproduced in any form
(photocopy, microfilm or other process) or processed, duplicated
or distributed using electronic systems without the written
permission from simex Medizintechnik GmbH.
The pictures of the goods can appear different from the
delivered goods.
Products are not available in all countries!
This brochure is for distribution outside the USA only!

SX4002-EN
BR_cuffM-S_Zubehoer_EN_2022-05-16_Rev.01

simex Medizintechnik GmbH
Brückstraße 30/1
78652 Deißlingen, Germany

phone +49 (0) 7420 9204-0
fax +49 (0) 7420 9204-17
e-mail info@simexmed.de
internet www.simexmed.de
