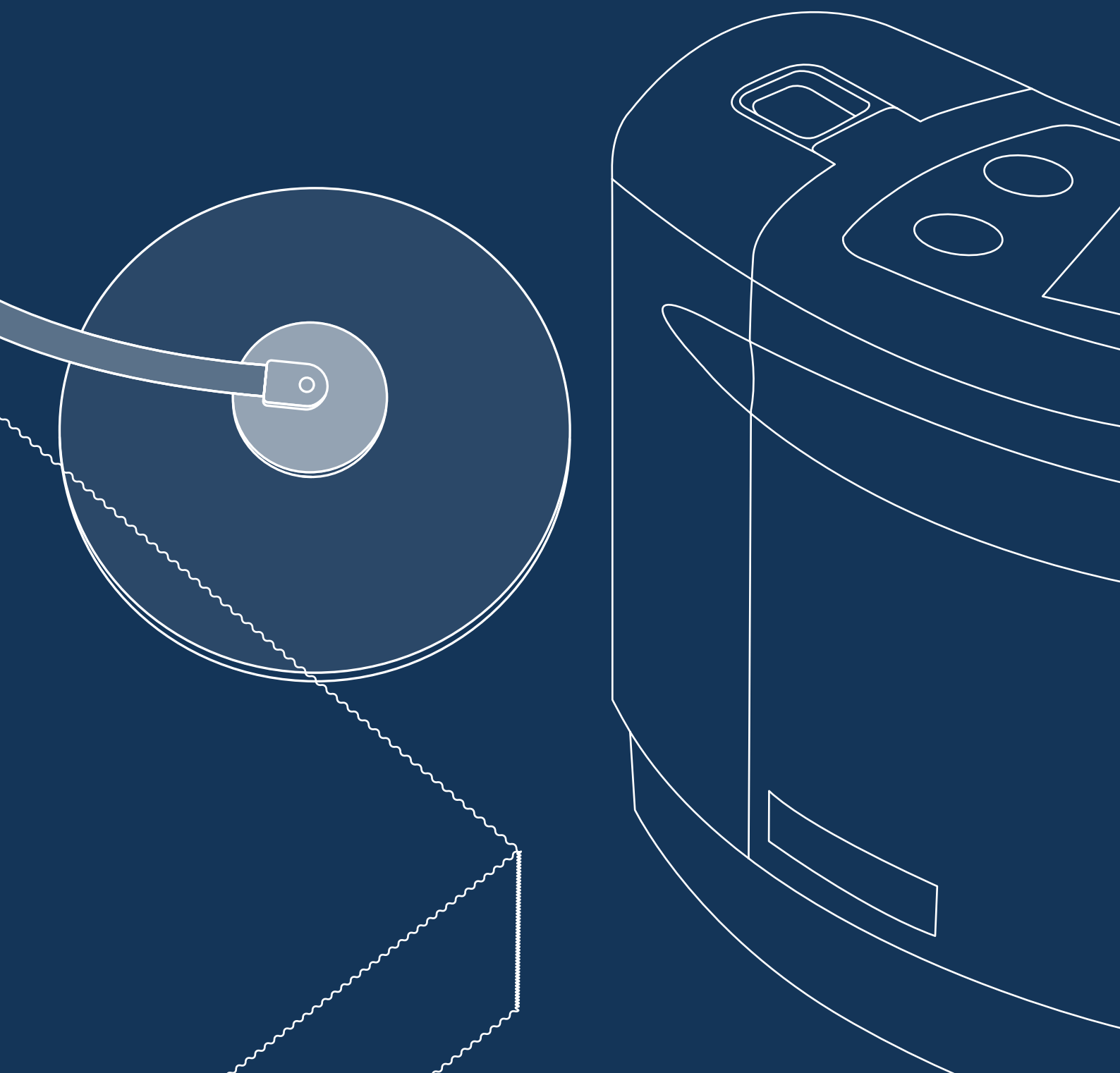




Negative Pressure Wound Therapy

# Consumables and Accessories Catalogue

SIM<sup>EX200</sup> & SIM<sup>EX300</sup>



# philosophy & history

## 1994 Year of establishment

Since simex Medizintechnik GmbH was founded, the family-owned company has developed into a competent and reliable partner for medical professionals and distributors worldwide. High quality standards and excellent customer service have led to an outstanding recognition on the international markets. In order to ensure these requirements, a quality management system was successfully implemented according to DIN EN ISO 13485 since 1997.

simex is characterized by remarkable performance in the areas of design and development, manufacturing and sale of products in the field of negative pressure therapy and the treatment of intensive care patients. Together with our competent external partners, we're able to form synergies for developing new solutions in the field of healthcare. Our vision is to continuously improve the established treatment methods through development of new, innovative and efficient product systems in order to sustainably increase health and patient comfort.

We can offer an individually adapted service for the different customer needs, due to the high flexibility and commitment of our employees. Our aim is to create an additional advantage for the customer and to exceed their expectations.

## 10.000+ Products

simex Medizintechnik GmbH offers a comprehensive product range.

The product portfolio consists of:

- Negative Pressure Wound Therapy System (NPWT)
- Automated Subglottic Aspiration System
- Portable Suction System
- General Surgical Instruments
- Micro- and Neuro Surgical Instruments
- Endoscopy Instruments



# location

Our company is located near the origin of the river Neckar between the towns of Villingen-Schwenningen and Rottweil since more than 25 years.



**SIM<sup>EX200</sup>**  
mobility miracle





Description

The disposable secretion canister system consists of a canister with a permanently attached suction tube. A bacterial filter, a carbon filter and a solidifier are also integrated in the system. The integrated hydrophobic bacterial filter works effectively against bacteria and viruses. In the event of an user error, this integrated filter prevents oversuction and contamination of the SIM<sup>EX200</sup>. If liquid reaches this filter, the suction process is interrupted and an error message appears on the display.

The treatment can be continued after changing the disposable secretion canister. Furthermore, the built-in carbon filter prevents odor.

The integrated solidifier enables a leak-proof transport and a safe disposal of the canister system. After a short period of time, the liquid has thickened firmly.

Benefits

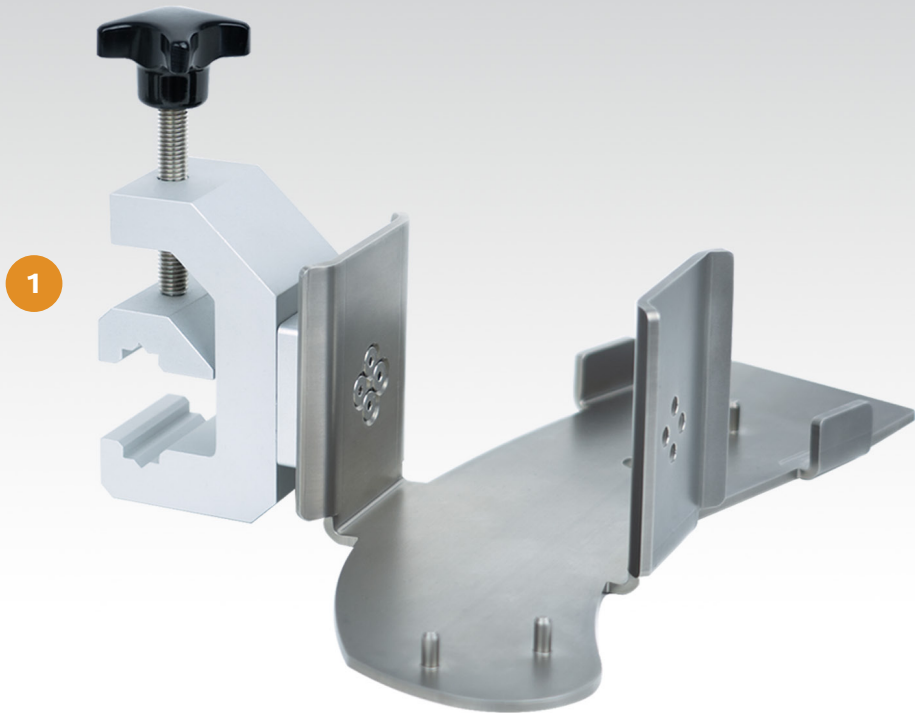
- Easy handling and quick exchange
- Can be operated upright and horizontally
- Overflow protection and odor minimization

Features

- Disposable secretion canister with integrated solidifier
- Available in different sizes
- Large Bore connector

Item number	Description	Packaging unit
1 100488LB	SIM <sup>EX200</sup> Disposable secretion canister system, 750 ml	13
2 100489LB	SIM <sup>EX200</sup> Disposable secretion canister system, 250 ml	35





Description

The simex device holder has a long service life. It enables an individual assembly of the suction device SIM<sup>EX200</sup> on IV-pole holder and rail systems. Due to the high quality of the used materials, the holder can easily be cleaned and disinfected. The holder is therefore ideally suited for use in sensitive areas such as intensive care units, care facilities, etc.

The holder is compatible with the SIM<sup>EX200</sup> disposable canister system (250 ml / 750 ml).

Item number	Description	Packaging unit
1 100776	SIM <sup>EX200</sup> Holder for IV-pole/rail systems	1



Description

The transport case can be used for storage and transport. The device and the accessories can be stored in a shock- and splash-proof manner.

The single-use carrying bag is designed for mobile patients. When changing patients, the bag can be easily disposed. This cost-effective solution prevents cross-contamination.

Item number	Description	Packaging unit
2 100500	SIM <sup>EX200</sup> Carrying bag	1
3 100498	SIM <sup>EX200</sup> Transport case	1

**SIM<sup>EX300</sup>**  
large volume







Description

The simex disposable secretion canister system was specially developed for use in the inpatient area. The system consists of an outer canister, the holder for the outer canister, the suction bag and a connecting hose.

The outer canister and its holder, as well as the connecting hose, can be easily cleaned/disinfected. simex Medizintechnik GmbH recommends replacing the parts between patients or at least every 4 weeks. Please always observe the applicable hygiene regulations.

The secretion is absorbed in the suction bag with a capacity of 1 L. A solidifier has been integrated for safe disposal, which prevents leakage and contact with possibly contaminated suction material. Further highlights of the canister system are the hydrophobic filter, which serves as an overflow protection as well as the carbon filter to minimize odors. Together with the internal built-in hydrophilic filter, the inside of the device is effectively protected against oversuction and contamination.

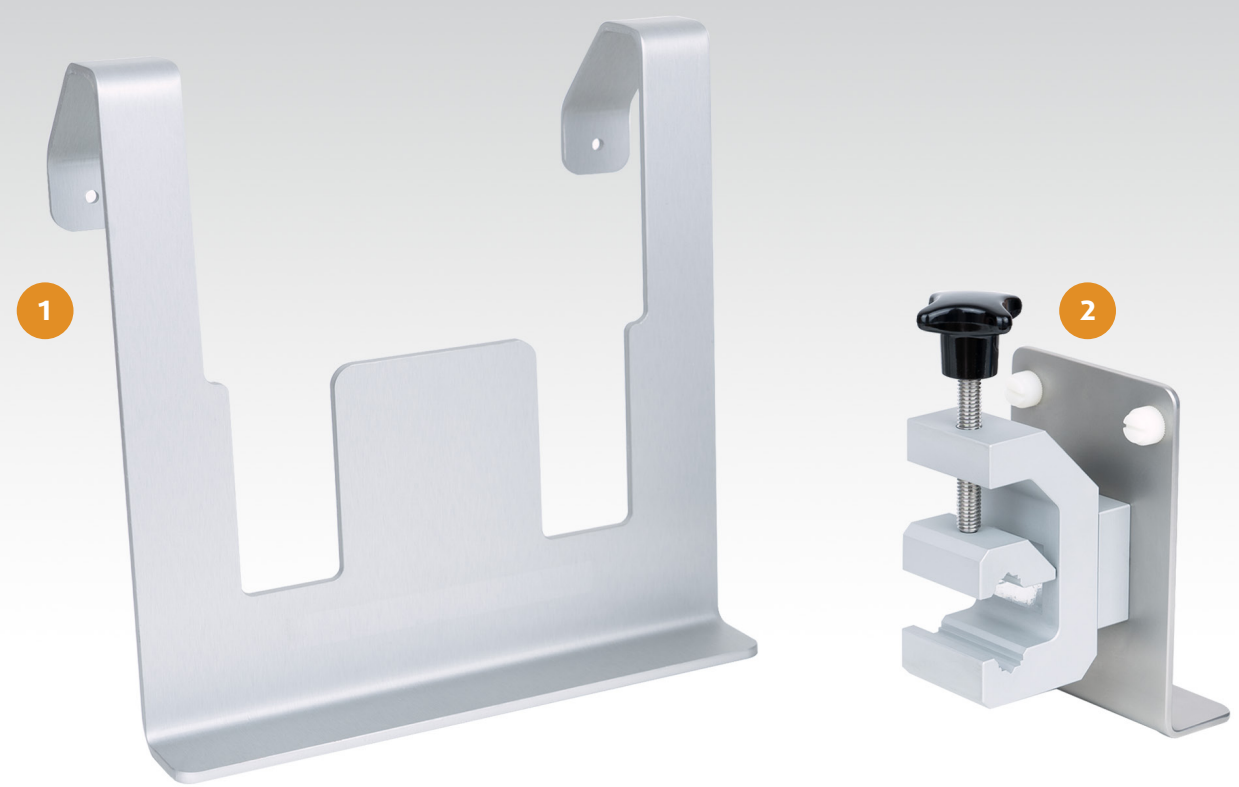
Benefits

- Cost effective canister system
- Safe and quick disposal

Features

- Multi-part canister system
- Overflow protection and odor minimization

Item number	Description	Packaging unit
1 20103	SIM <sup>EX300</sup> Connecting tube	1
2 100509	SIM <sup>EX300</sup> Disposable suction bag, 1 L	60
3 100414	SIM <sup>EX300</sup> Outer canister, 1 L	1
4 100416	SIM <sup>EX300</sup> Canister holder	1



Description

The product group of simex device holders is characterized by their high durability and the various mounting positions. Due to the high quality of the used materials, the holders can easily be cleaned and disinfected. The holders are therefore ideally suited for use in sensitive areas such as intensive care units, care facilities, etc.

We recommend the universal holder for mounting to patient beds. The device simply slides into the holder from above. The IV-pole/rail holder is ideally suited for further fastening options. The device also slides into the holder from above and is secured by two screws. The clamp can be turned at intervals of 45 °.

Item number	Description	Packaging unit
1 100484	SIM <sup>EX300</sup> Universal holder	1
2 100346	SIM <sup>EX300</sup> Holder for IV-pole/rail systems	1

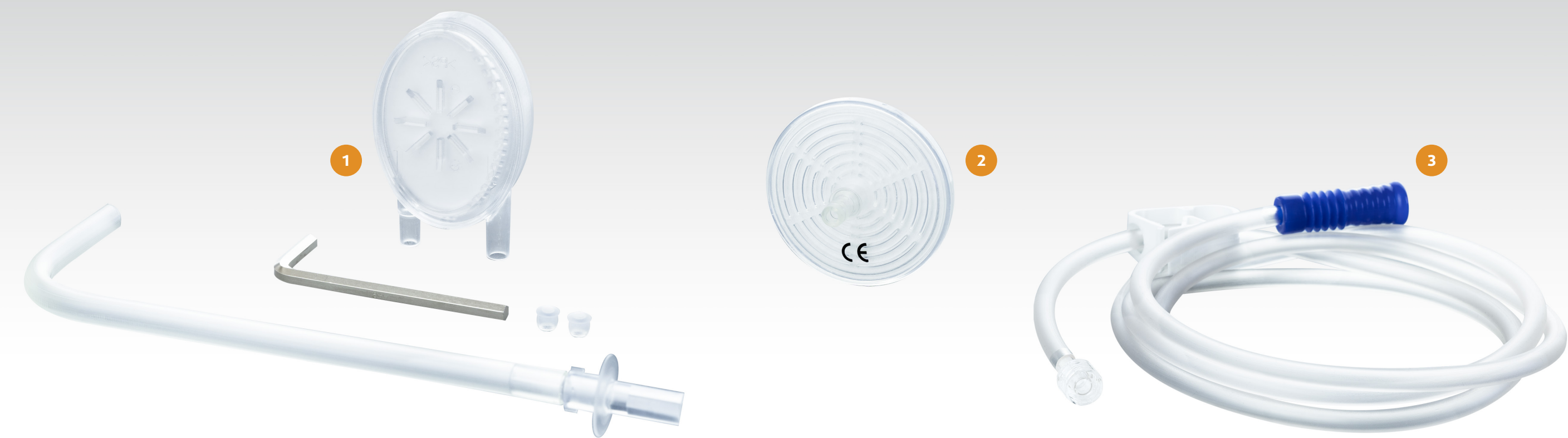


Description

The transport case can be used for storage and transport. The device and the accessories can be stored in a shock-proof and splash-proof manner.

The single-use carrying bag is designed for mobile patients. When changing patients, the bag can be easily disposed. This cost-effective solution prevents cross-contamination.

Item number	Description	Packaging unit
3 100501	SIM <sup>EX300</sup> Carrying bag	1
4 100499	SIM <sup>EX300</sup> Transport case	1



Description

The SIM<sup>EX300</sup> system has an internal bacteria filter. It protects the inside of the device effectively from contamination and oversuction. The replacement set for the double filter system ensures a safe reprocessing and a quick re-use of the product.

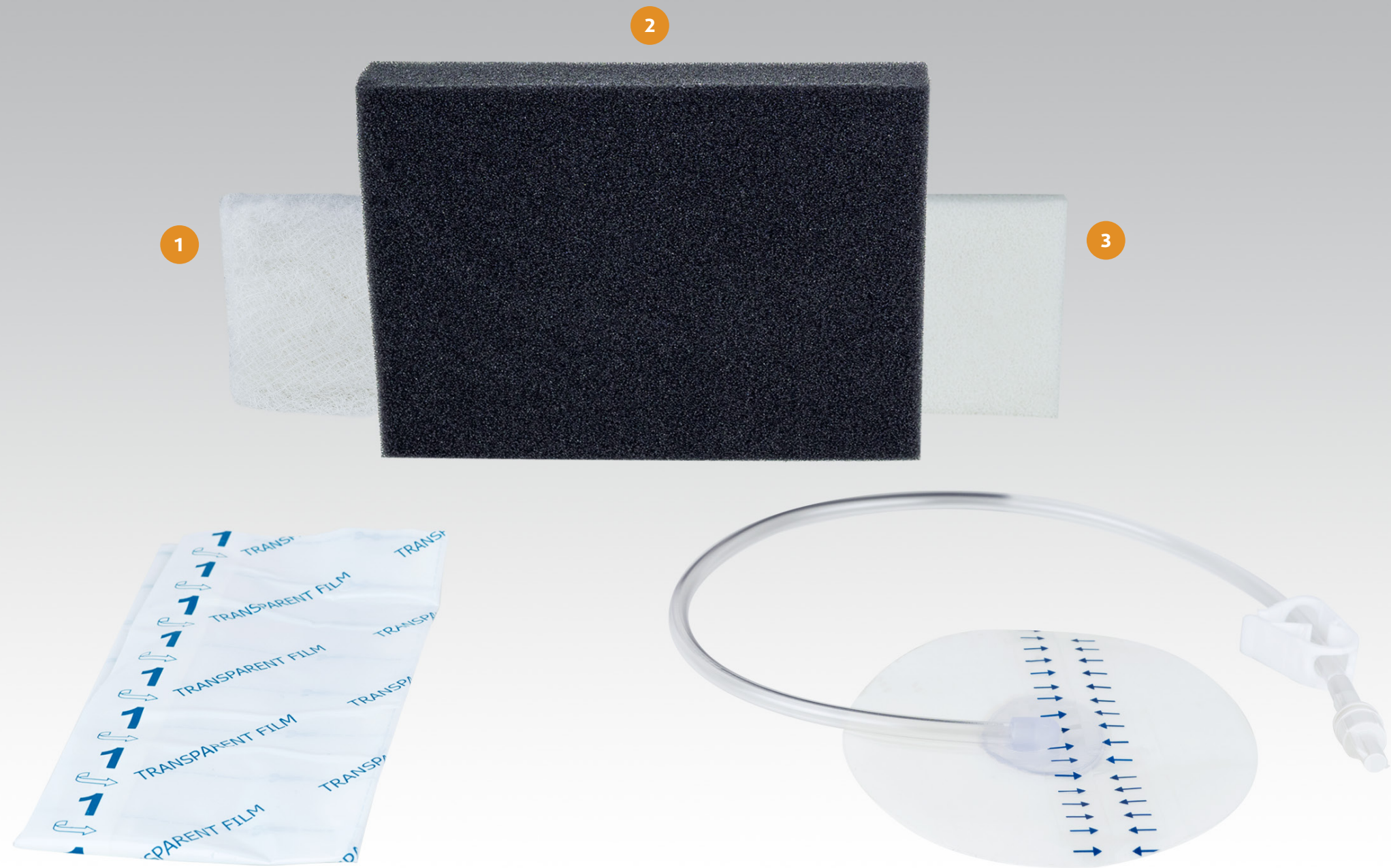
The round bacterial filter can be used as additional protection against contamination and oversuction, placed between the suction bag and the device.

The 180 cm long suction tube with an outer diameter of CH 21 (7 mm) is equipped with a clamp, as well as a large bore connector. This suction tube fits for all simex dressing sets.

The Y-suction tube comes with a wider outer diameter of CH 30 (10 mm) for unrestricted aspiration performance in combination with multiple wounds.

	Item number	Description	Packaging unit
1	100012	Replacement set double filter system DFS	1
2	100196	Bacterial filter	1
3	112203LB	Sterile suction tube, large bore connector, 180 cm	1
4	112203	Sterile suction tube, step connector, 180 cm	1
5	12206LB	Sterile Y-suction tube, large bore connector, 180 cm	1





Description

The black polyurethane wound sponges have an open pore structure with 400-600 microns and are hydrophobic. PU wound sponges are used for acute and chronic wounds for cleaning wounds or for wounds with a lot of exudate.

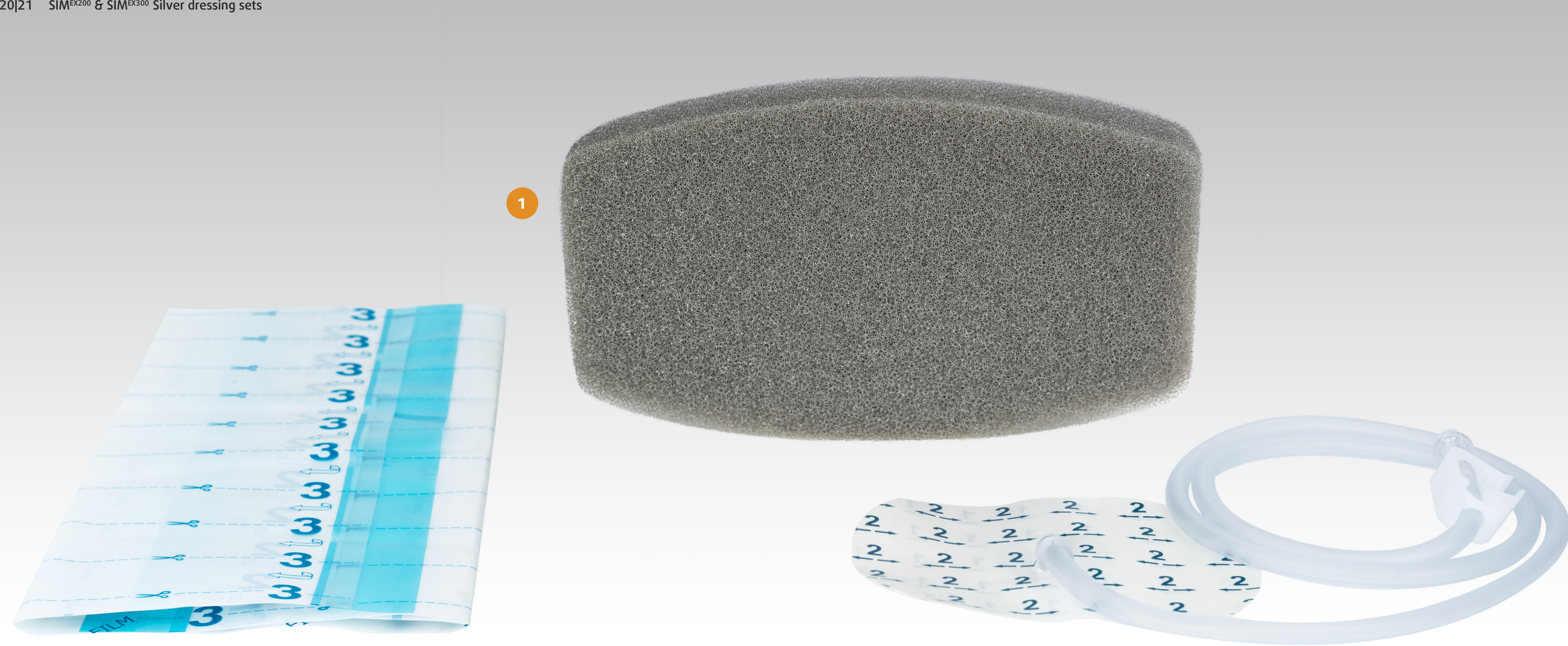
The white polyvinyl alcohol sponges are used for superficial wounds with little exudate and can also be used for fistulas.

Gauze can be easily adapted to a wide variety of wound shapes and is mainly used for superficial wounds. Gauze is also suitable for undermined wounds and tunnelled wounds.

Item number	Description	Packaging unit
1 199680	NPWT Gauze set small	1
1 199682	NPWT Gauze set medium	1
1 199684	NPWT Gauze set large	1

Item number	Description	Packaging unit
2 199450	NPWT PU foam set small, 100x80x30 mm	1
2 199452	NPWT PU foam set medium, 180x130x30 mm	1
2 199454	NPWT PU foam set large, 250x150x30 mm	1
2 199456	NPWT PU foam set X-large, 300x400x30 mm	1
2 199470	NPWT PU foam set Abdominal, 300x400x10 mm	1
2 199025	NPWT PU foam set Heel	1
3 199460	NPWT PVA foam set small, 75x100x10 mm	1
3 199464	NPWT PVA foam set large, 150x100x10 mm	1



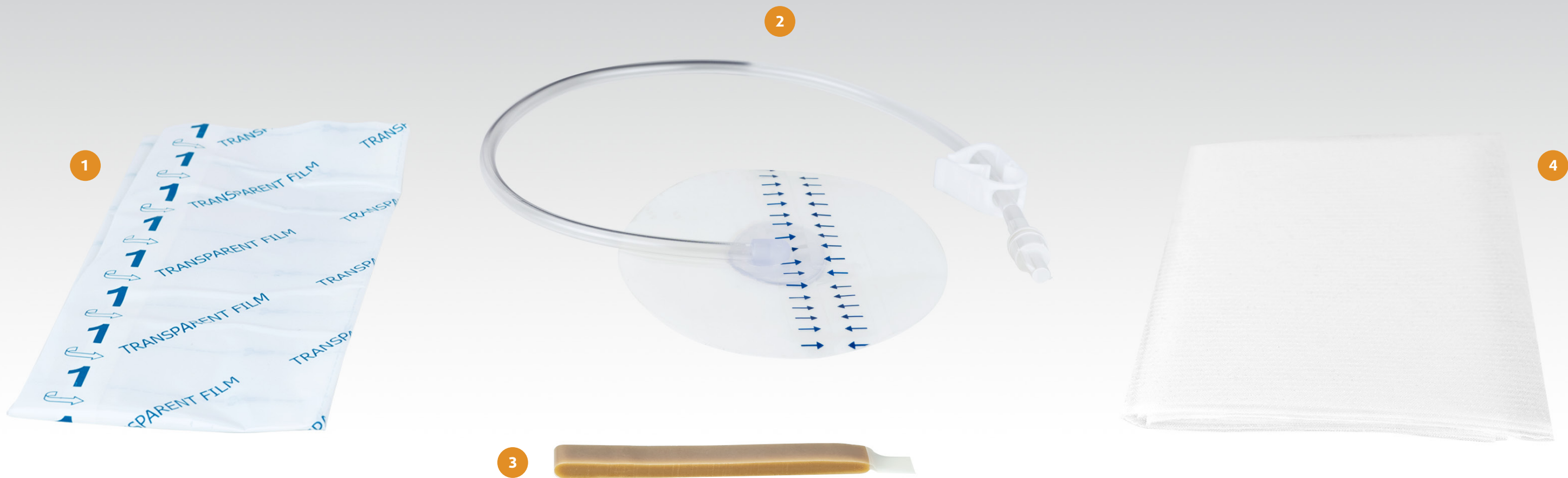


Description

Due to their antibacterial effect, PU silver wound foams are suitable for the treatment of infected wounds. After application, the special silver foam releases silver ions and fights wound infections permanently.

With 400-600 microns, the wound foam has an open-pored structure and can therefor transport wound exudate quickly and easily. The suction pad of the silver dressing set is characterized by its soft, flexible tube and the good adhesion of the carrier film.

Item number	Description	Packaging unit
1 199500	NPWT PU silver dressing set small, 150x100x30 mm	1
1 199510	NPWT PU silver dressing set medium, 170x100x30 mm	1
1 199520	NPWT PU silver dressing set large, 250x150x30 mm	1



Description

The semi-permeable transparent dressing film has excellent adhesive properties for the sealing of the wound.

The suction pad is placed over an approx. 2 cm opening in the transparent foil and connected to the NPWT system.

Stoma Strips can help to seal the dressing.

The special abdominal film protects organs from the PU wound sponge and, thanks to its structure, enables exudate to be removed from the abdomen effectively.

	Item number	Description	Packaging unit
1	199621	NPWT Transparent dressing film, 250x300 mm	1
1	199623	NPWT Transparent dressing film, 300x400 mm	1
2	199612	Suction pad, sterile, large bore connector	1
3	99120	Stoma strips	1
4	100416	NPWT Abdominal film, 600x500 mm	1





Description

Antimicrobial gauze inhibits bacterial growth and can be easily adapted to a wide variety of wound shapes. Gauze can be used for tunneling and wound pockets. Gauze prevents tissue ingrowth and is easy and painless to replace.

Multiple wounds can be treated simultaneously in one patient with the Y-connectors or with Y-suction tube.

Item number	Description	Packaging unit
1 99110	Gauze roll, 11,4 cm x 3,7 m	1
2 100525	Y-connector with 1 large bore and 2 luer	1
3 199616	Y-connector with 3 large bore	1
4 99100	Gauze, 15x17 cm	2



Description

The SIM<sup>EX200</sup> and SIM<sup>EX300</sup> devices are operated via the internal battery or the supplied power supply unit, which also enables the battery to be charged. In addition, an overtemperature protection prevents the battery from overheating by interrupting the charging process if the battery temperature is too high (e. g. due to unfavorable ambient conditions).

Check the power supply unit and the power cord before use for possible damage and replace it immediately if it is damaged.

Item number	Description	Packaging unit
1 100442	Power supply unit incl. adapter (EU, US, UK, AU)	1



Description

Car charger with adapter plug for cigarette lighter to charge the devices on the go.

Item number	Description	Packaging unit
2 400127	Car charging cable	1



All rights reserved. Reprinting, even excerpt-wise, is forbidden.  
No part of the catalogue may be reproduced in any form  
(photocopy, microfilm or other process) or processed, duplicated  
or distributed using electronic systems without the written  
permission from simex Medizintechnik GmbH.  
The pictures of the goods can appear different from the  
delivered goods.  
Products are not available in all countries!  
This brochure is for distribution outside the USA only!

SX4001-EN  
BR\_simex200-300\_Zubehoer\_EN\_2022-05-03\_Rev.00

**simex Medizintechnik GmbH**  
Brückstraße 30/1  
78652 Deißlingen, Germany

**phone** +49 (0) 7420 9204-0  
**fax** +49 (0) 7420 9204-17  
**e-mail** [info@simexmed.de](mailto:info@simexmed.de)  
**internet** [www.simexmed.de](http://www.simexmed.de)

---